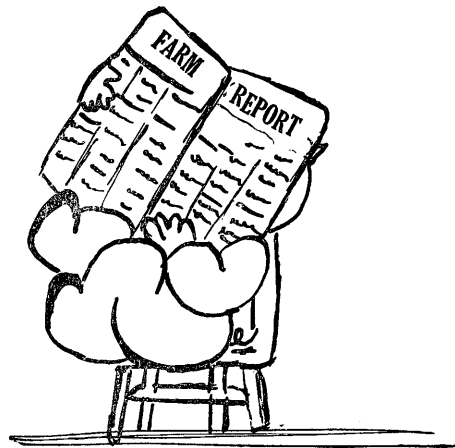


1957 ANNUAL REPORT  
VOCATIONAL AGRICULTURE  
FARM ANALYSIS  
EAST SOUTH CENTRAL MINNESOTA



AUSTIN AREA VOCATIONAL SCHOOL  
AUSTIN, MINNESOTA

IN COOPERATION WITH

VOCATIONAL DIVISION, MINNESOTA DEPARTMENT OF EDUCATION  
AND AGRICULTURAL EDUCATION DEPARTMENT  
UNIVERSITY OF MINNESOTA

APRIL, 1958

1957 REPORT OF THE VOCATIONAL AGRICULTURE  
FARM ANALYSIS SERVICE IN EAST SOUTH CENTRAL MINNESOTA

Charles M. Painter

INDEX

|  | Page |
|--|------|
| Introduction . . . . .   | 1    |
| Schools Included in the Analysis . . . . .                       | 2    |
| Farm Inventories . . . . .                                       | 3    |
| Farm Earnings (cash statement) . . . . .                         | 4    |
| Farm Earnings (enterprise statement) . . . . .                   | 5    |
| Household and Personal Expenses and Receipts . . . . .           | 6    |
| Net Worth. . . . .   | 6    |
| Earnings by Tenure . . . . .                                     | 7    |
| Range in Earnings. . . . .                                       | 8    |
| Explanation of "Work Units". . . . .                             | 9    |
| Measures of Farm Organization and Management Efficiency. . . . . | 10   |
| Thermometer Chart. . . . .                                       | 11   |
| Distribution of Acres and Crop Yield . . . . .                   | 12   |
| Total Feed Costs and Returns from Livestock Enterprises. . . . . | 13   |
| Hogs . . . . .   | 13   |
| Hogs . . . . .   | 14   |
| Dairy Cattle . . . . .   | 15   |
| Dairy Cattle . . . . .   | 16   |
| Beef Cattle. . . . .   | 17   |
| Sheep. . . . .   | 18   |
| Chickens . . . . .   | 19   |
| Turkeys. . . . .   | 20   |

INTRODUCTION

This is the third year that an analysis has been made by the Austin Area Vocational School. This type of analysis follows the same pattern as that used by the Farm Management Division of the University of Minnesota. These techniques have been developed through studies made with farm management association members since 1928.

We are indebted to Truman Nodland and his associates in the Farm Management Division for the many years of service rendered to vocational agriculture. The analysis of Veterans' Agriculture farm account books and those of cooperating Vocational Agriculture adult farmers has been the principle, but by no means the only, contribution to Vocational Agriculture by the Farm Management Division.

We would like also to express our appreciation to J. A. Kontta, Printing Instructor of the Austin Area Vocational School, and his class for preparing our cover page.

The main purposes of the farm analysis service in this area are: (1) to give assistance to instructors in the mechanics of farm record supervision; (2) to assist instructors and cooperating farmers in farm accounting techniques; (3) to aid the farmer in the study of his farm business through analysis reports and; (4) to provide case study material that can be used by farmers and farm groups to study management problems. The analysis is not set up for research purposes, but we hope that the data included here can be used for comparative studies.

This report and the analysis of records included in the report were done under the direction of Charles M. Painter, Vocational Agriculture Instructor of the Austin Area Vocational School. Clerical assistants were: Madge (Mrs. Merle) Anderson and Colleen Despard. Nylva Elkins, vocational office secretary, prepared the report. The loyalty of the clerical assistants was deeply appreciated.

Directing in a supervisory capacity for this and the other cooperating projects were: G. R. Cochran, State Supervisor of Agricultural Education and S. K. Wick, Assistant Director of Vocational Education in charge of Area Vocational Schools, and Morton Carney, Acting Director of the Austin Area Vocational School. Promotion and technical assistance were provided by Milo Peterson, Professor of Agriculture Education, and Lauren Granger, Farm Management Coordinator.

The professional assistance of G. A. Pond, University Division of Agricultural Economics, E. H. Hartmans and Harlan Routhe, Agriculture Extension Service, have done much to bring farm management study up to date. Lauren Granger's services are the result of a grant from the Hill Family Foundation.

Farmers pay a fee to cover the actual analysis costs. This fee covers the clerical costs of the analysis and cost of paper and stencils.

The following schools submitted 1957 farm records for analysis:

| <u>Name of School</u>              | <u>No. of Books</u> | <u>Instructors</u>                                     |
|------------------------------------|---------------------|--|
| Adams                              | 2                   | Arvid Anderson   |
| Austin (with Hayfield cooperating) | 26                  | Charles Painter,<br>Bert Fuller, and<br>Marvin Thomsen |
| Blooming Prairie                   | 1                   | Truman Tilleraas                                       |
| Byron                              | 1                   | Wallace J. McKay                                       |
| Cannon Falls                       | 1                   | James Erredge  |
| Kenyon                             | 1                   | John Shelstad  |
| Spring Valley                      | 1                   | Ed Morine  |
| Zumbrota                           | 6                   | Kenneth Monson   |
|                                    | 39*                 |  |

\* One book arrived too late to be included in the averages.

Table 1 Summary of Farm Inventories 1957\*

| Items                             | Your Farm |         | Average of 38 farms |         |
|-----------------------------------|-----------|---------|---------------------|---------|
|                                   | Jan. 1    | Dec. 31 | Jan. 1              | Dec. 31 |
| Size of farm (acres)              |           |         | 219                 |         |
| Size of business (work units)**   |           |         | 448                 |         |
| Dairy and dual purpose cows       |           |         | \$ 2529             | \$ 2600 |
| Other dairy & dual purpose cattle |           |         | 1418                | 1506    |
| Beef cattle (including feeders)   |           |         | 1765                | 2442    |
| Hogs                              |           |         | 2106                | 2658    |
| Sheep (including feeders)         |           |         | 102                 | 102     |
| Poultry (including turkeys)       |           |         | 509                 | 361     |
| Productive livestock (total)      |           |         | 8429                | 9669    |
| Horses                            |           |         | 18                  | 20      |
| Crop, seed, and feed              |           |         | 6896                | 6587    |
| Power machinery (farm share)      |           |         | 3015                | 3102    |
| Crop and general machinery        |           |         | 3366                | 3663    |
| Livestock equipment               |           |         | 1018                | 1121    |
| Machinery & equipment (total)     |           |         | 7399                | 7886    |
| Miscellaneous                     |           |         | --                  | --      |
| Land                              |           |         | 12361               | 12370   |
| Buildings, fences, etc.           |           |         | 11678               | 11922   |
| Total farm capital                |           |         | 46781               | 48454   |

| Items                             | 12 most Profitable farms |         | 12 least Profitable farms |         |
|-----------------------------------|--------------------------|---------|---------------------------|---------|
|                                   | Jan. 1                   | Dec. 31 | Jan. 1                    | Dec. 31 |
| Size of farm (acres)              | 229                      |         | 230                       |         |
| Size of business (work units)**   | 575                      |         | 379                       |         |
| Dairy and dual purpose cows       | \$ 2460                  | \$ 2450 | \$ 1898                   | \$ 1934 |
| Other dairy & dual purpose cattle | 1031                     | 1416    | 1209                      | 823     |
| Beef cattle (including feeders)   | 2262                     | 4142    | 3238                      | 3452    |
| Hogs                              | 2948                     | 4968    | 2143                      | 1704    |
| Sheep (including feeders)         | 238                      | 250     | 70                        | 60      |
| Poultry (including turkeys)       | 1063                     | 567     | 340                       | 352     |
| Productive livestock (total)      | 10002                    | 13793   | 8898                      | 8325    |
| Horses                            | 21                       | 20      | 37                        | 42      |
| Crop, seed, and feed              | 7626                     | 8134    | 7425                      | 6908    |
| Power Machinery (farm share)      | 2942                     | 3518    | 3493                      | 3627    |
| Crop & general machinery          | 3737                     | 4108    | 3977                      | 4397    |
| Livestock equipment               | 1506                     | 1658    | 772                       | 747     |
| Machinery & equipment (total)     | 8185                     | 9284    | 8242                      | 8771    |
| Miscellaneous                     | --                       | --      | --                        | --      |
| Land                              | 11395                    | 11395   | 13331                     | 13359   |
| Buildings, fences, etc.           | 11446                    | 12424   | 12510                     | 12324   |
| Total farm capital                | 48675                    | 55050   | 50443                     | 49729   |

\* For the purpose of comparison, all the data shown in this report, with the exception of household expenses, are presented on a full-owner basis. The assets, expenses and receipts of the landlord were included in the records from rented farms.

\*\* See explanation of work unit on page 9.

Table 2 Summary of Farm Earnings (Cash Statement) 1957

| Items                               | Your<br>farm | Average<br>of 37*<br>farms | 12 most<br>profitable<br>farms | 12 least<br>profitable<br>farms |
|-------------------------------------|--------------|----------------------------|--------------------------------|---------------------------------|
| <b>FARM RECEIPTS</b>                |              |                            |                                |                                 |
| Dairy and dual-purpose cattle       |              | \$ 1220                    | \$ 1134                        | \$ 1050                         |
| Dairy products                      |              | 4406                       | 4635                           | 2784                            |
| Beef cattle (including feeders)     |              | 2960                       | 6106                           | 2952                            |
| Hogs                                |              | 6814                       | 10518                          | 5559                            |
| Sheep and wool (including feeders)  |              | 137                        | 304                            | 92                              |
| Horses                              |              | 2                          | --                             | 7                               |
| Poultry                             |              | 1609                       | 4447                           | 384                             |
| Eggs                                |              | 1334                       | 1952                           | 1179                            |
| Corn                                |              | 1683                       | 1604                           | 2516                            |
| Small grain                         |              | 332                        | 624                            | 173                             |
| Other crops                         |              | 896                        | 650                            | 1274                            |
| Mach. & equip. sold & gas tax ref.  |              | 134                        | 147                            | 139                             |
| Misc. farm income                   |              | 232                        | 358                            | 221                             |
| Income from work off the farm       |              | 152                        | 190                            | 150                             |
| (1) Total farm sales                |              | 21911                      | 32669                          | 18480                           |
| (2) Increase in farm capital        |              | 1993                       | 6374                           | --                              |
| (3) Family living from the farm     |              | 260                        | 210                            | 287                             |
| (4) Total farm receipts (1)+(2)+(3) |              | 24164                      | 39253                          | 18767                           |
| <b>FARM EXPENSES</b>                |              |                            |                                |                                 |
| Dairy and dual-pur. cattle bought   |              | \$ 301                     | \$ 223                         | \$ 332                          |
| Beef cattle bought (incl. feeders)  |              | 2038                       | 5022                           | 1260                            |
| Hogs bought                         |              | 489                        | 549                            | 719                             |
| Sheep bought (incl. feeders)        |              | 10                         | --                             | 23                              |
| Horses bought                       |              | --                         | --                             | --                              |
| Poultry bought                      |              | 465                        | 1172                           | 166                             |
| Misc. livestock expense             |              | 539                        | 880                            | 365                             |
| Feed bought                         |              | 3946                       | 7749                           | 2522                            |
| Fertilizers                         |              | 892                        | 1322                           | 816                             |
| Other crop expenses                 |              | 678                        | 713                            | 953                             |
| Custom work hired                   |              | 565                        | 604                            | 556                             |
| Gas, oil & grease bought (f.share)  |              | 817                        | 842                            | 932                             |
| Rep. of Mechanical power (f.share)  |              | 375                        | 386                            | 431                             |
| Repair and upkeep of real estate    |              | 345                        | 350                            | 307                             |
| Rep. & upkeep of crop & gen. Mach.  |              | 289                        | 366                            | 309                             |
| Rep. & upkeep of livestock equip.   |              | 177                        | 241                            | 177                             |
| Wages of hired labor                |              | 570                        | 619                            | 738                             |
| Electricity expense (f. share)      |              | 221                        | 253                            | 193                             |
| Real estate & pers. prop. taxes     |              | 657                        | 692                            | 657                             |
| Cash rent                           |              | --                         | --                             | --                              |
| General farm expense                |              | 235                        | 301                            | 256                             |
| (5) Total cash operating expense    |              | 13609                      | 22284                          | 11712                           |
| (6) Cap. purc.-mech.pow. (f.share)  |              | 680                        | 1190                           | 716                             |
| (7) Cap. purc.-crop & gen. Mach.    |              | 912                        | 1067                           | 1195                            |
| (8) Cap. purc.-livestock equip.     |              | 316                        | 449                            | 160                             |
| (9) Cap. purc.-bldgs. & fencing     |              | 848                        | 1759                           | 432                             |
| (10) Total farm purchases (5)to(9)  |              | 16365                      | 26749                          | 14215                           |
| (11) Decrease in farm capital       |              | --                         | --                             | 714                             |
| (12) Interest on farm capital       |              | 2328                       | 2593                           | 2503                            |
| (13) Unpaid family labor            |              | 345                        | 297                            | 349                             |
| (14) Board furnished hired labor    |              | 20                         | 12                             | 18                              |
| (15) Total farm expenses (10)to(14) |              | 19058                      | 29651                          | 17799                           |
| (16) Labor earnings (4) - (15)      |              | 5106                       | 9602                           | 968                             |

\* See the Footnote\*\* on page 5

Table 3 Summary of Farm Earnings (Enterprise Statement) 1957\*

| ITEMS                                  | Your<br>farm | Average<br>of 37**<br>farms | 12 most<br>profitable<br>farms | 12 least<br>profitable<br>farms |
|--|--------------|-----------------------------|--------------------------------|---------------------------------|
| RETURNS AND NET INCREASES              |              |                             |                                |                                 |
| 1. Dairy and dual-purpose cows         |              | \$ 4595                     | \$ 4746                        | \$ 2831                         |
| 2. Other dairy & dual-pur. cattle      |              | 1228                        | 1361                           | 603                             |
| 3. Beef breeding herd                  |              | 241                         | --                             | 744                             |
| 4. Feeder cattle                       |              | 1399                        | 2976                           | 1219                            |
| 5. Hogs                                |              | 6941                        | 12030                          | 4445                            |
| 6. Sheep-farm flock                    |              | 128                         | 316                            | 59                              |
| 7. Sheep-feeders                       |              | --                          | --                             | --                              |
| 8. Turkeys                             |              | 973                         | 2789                           | 210                             |
| 9. Chickens                            |              | 1409                        | 2004                           | 1239                            |
| 10. All productive livestock           |              | 16914                       | 26222                          | 11350                           |
| 11. Value of feed fed to livestock     |              | 9451                        | 14466                          | 7608                            |
| 12. Return over feed from livestock    |              | 7463                        | 11756                          | 3742                            |
| 13. Crops, seed, and feed              |              | 6660                        | 7975                           | 6626                            |
| 14. Income from labor off the farm     |              | 7                           | 19                             | 2                               |
| 15. Agricultural conservation payments |              | 48                          | 58                             | 88                              |
| 16. Miscellaneous                      |              | 181                         | 294                            | 133                             |
| 17. Total returns and net increases    |              | 14359                       | 20102                          | 10591                           |
| EXPENSES AND NET DECREASES             |              |                             |                                |                                 |
| 18. Horses                             |              | \$ -4                       | \$ --                          | \$ -13                          |
| 19. Truck                              |              | 257                         | 231                            | 316                             |
| 20. Auto (farm share)                  |              | 375                         | 436                            | 290                             |
| 21. Tractor                            |              | 987                         | 1068                           | 1163                            |
| 22. Elec. & gas engine exp. (f. share) |              | 214                         | 214                            | 194                             |
| 23. Hired power                        |              | 362                         | 353                            | 344                             |
| 24. Total power                        |              | 2191                        | 2302                           | 2294                            |
| 25. Crop and general machinery         |              | 1022                        | 1120                           | 1185                            |
| 26. Livestock equipment                |              | 390                         | 554                            | 364                             |
| 27. Buildings, fencing, and tiling     |              | 956                         | 1130                           | 892                             |
| 28. Misc. productive livestock exp.    |              | 539                         | 880                            | 365                             |
| 29. Labor                              |              | 935                         | 928                            | 1105                            |
| 30. Real estate taxes                  |              | 512                         | 559                            | 526                             |
| 31. Personal property tax              |              | 145                         | 133                            | 132                             |
| 32. Insurance                          |              | 125                         | 160                            | 135                             |
| 33. General farm                       |              | 110                         | 141                            | 121                             |
| 34. Interest on farm capital           |              | 2328                        | 2593                           | 2504                            |
| 35. Total expenses & net decreases     |              | 9253                        | 10500                          | 9623                            |
| 36. Labor earnings                     |              | 5106                        | 9602                           | 968                             |

\* Cash receipts and expenses are adjusted for changes in inventory for each enterprise and for each item of expense in order to show total receipts and net increases, and total expenses and net decreases.

\*\* One farm omitted from averages because part of livestock enterprise involved commercial buying and selling.

Table 4 Household and Personal Expenses for  
Those Farms Which Kept Complete Accounts of These Expenses 1957

| Items   | Your<br>farm | Average<br>of 17<br>farms |
|---|--------------|---------------------------|
| Number of persons - family                        |              | 4.5                       |
| Number of adult equiv. - family                   |              | 3.3                       |
| other*  |              | .2                        |
| Food and meals bought                             |              | \$ 678                    |
| Operating and supplies                            |              | 251                       |
| Furnishings and equipment                         |              | 249                       |
| Clothing and clothing materials                   |              | 253                       |
| Personal care, personal spending                  |              | 118                       |
| Education, recreation, and development            |              | 214                       |
| Gifts and special events                          |              | 76                        |
| Medical care and health insurance                 |              | 268                       |
| Church, welfare                                   |              | 83                        |
| Personal share of auto expense                    |              | 194                       |
| Operator's share of upkeep on dwelling            |              | 49                        |
| Household share of electric and telephone expense |              | 118                       |
| Total cash living expense                         |              | \$2551                    |
| H.H. & pers. share of new auto                    |              | 155                       |
| New dwelling                                      |              | 7                         |
| Taxes and other deductions                        |              | 1                         |
| Life insurance                                    |              | 596                       |
| Other savings and investments                     |              | 55                        |
| Total household and personal cash expense         |              | \$3367                    |
| Income:   |              |                           |
| Operators labor earnings                          |              | \$4878                    |
| Return to capital and labor                       |              | \$6547                    |

\* Hired help or others boarded.

Table 5 Net Worth Statement for Those Farmers Who Kept A  
Complete Record of All Assets and Liabilities 1957 (Operator's Share)

| Items                    | Your farm |         | 31 farms |         |
|--------------------------|-----------|---------|----------|---------|
|                          | Jan. 1    | Dec. 31 | Jan. 1   | Dec. 31 |
| Total farm capital       |           |         | \$37080  | \$38225 |
| Auto (personal share)    |           |         | 428      | 524     |
| Dwelling                 |           |         | 1751     | 1689    |
| Other personal assets    |           |         | 3773     | 4574    |
| TOTAL ASSETS             |           |         | \$43032  | \$45012 |
| Real estate indebtedness |           |         | 8782     | 8677    |
| Other indebtedness       |           |         | 5189     | 5366    |
| TOTAL LIABILITIES        |           |         | \$13969  | \$14043 |
| Farmer's Net Worth       |           |         | \$29063  | \$30969 |
| Gain in Net Worth        |           |         |          | \$ 1906 |

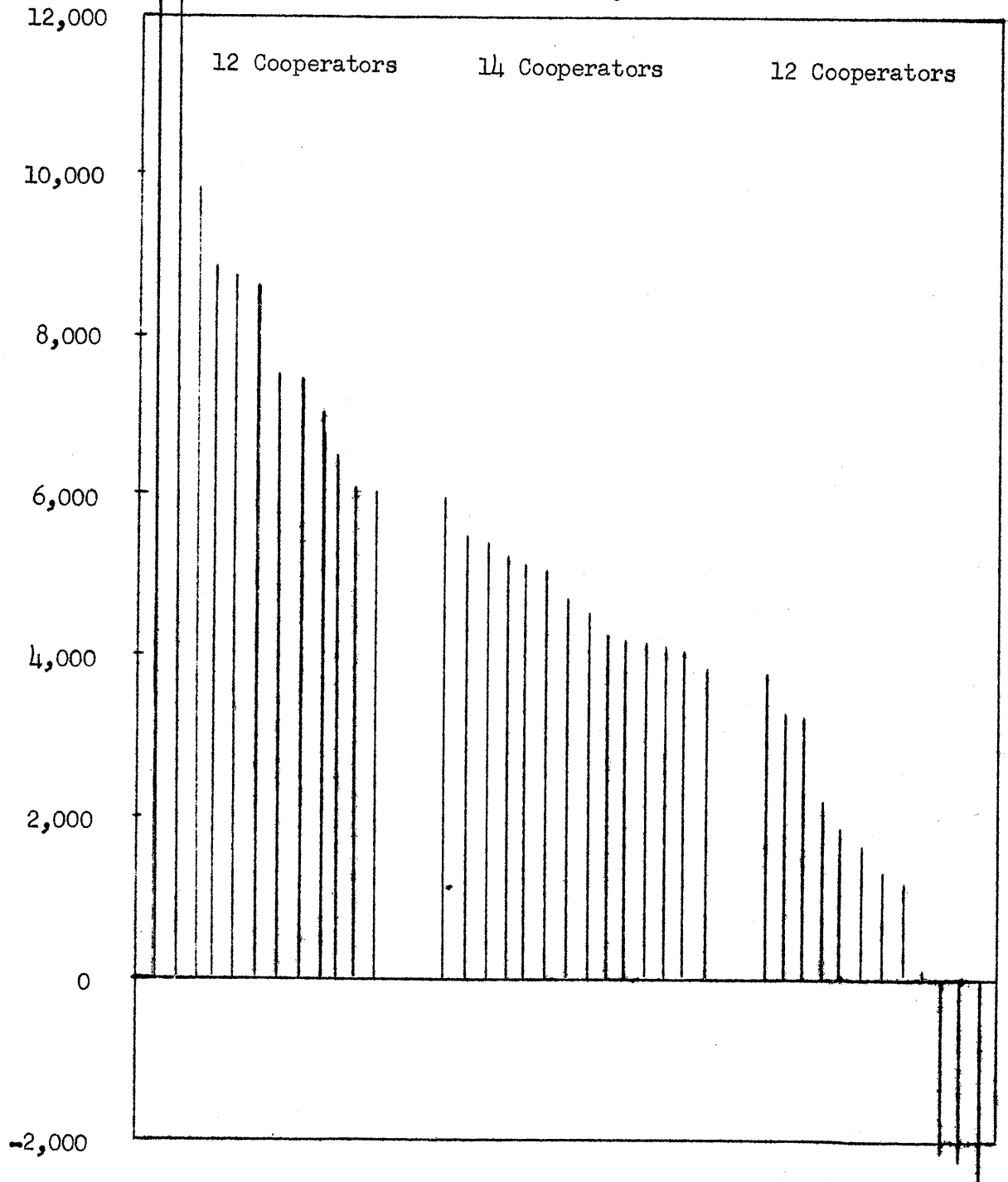
Table 6 Summary of Farm Earnings by Tenure 1957 (Operator's Share)

| Items  | Your<br>farm | 30 Owners and<br>Part Owners | 7 renters |
|--|--------------|------------------------------|-----------|
| <b>FARM RECEIPTS</b>                         |              |                              |           |
| Dairy and dual-purpose cattle                |              | \$ 1148                      | \$ 726    |
| Dairy products                               |              | 3887                         | 4224      |
| Beef cattle (including feeders)              |              | 3379                         | 582       |
| Hogs   |              | 7713                         | 2331      |
| Sheep and wool (including feeders)           |              | 152                          | 58        |
| Horses                                       |              | 3                            | --        |
| Poultry (including turkeys)                  |              | 1957                         | 92        |
| Eggs   |              | 1279                         | 1366      |
| Corn   |              | 1322                         | 1851      |
| Small grain                                  |              | 326                          | 303       |
| Other crops                                  |              | 846                          | 737       |
| Machinery and equipment sold                 |              | 135                          | 105       |
| Income from work off the farm                |              | 163                          | 105       |
| Miscellaneous                                |              | 234                          | 222       |
| (1) Total farm sales                         |              | 22544                        | 12702     |
| (2) Increase in farm capital                 |              | 2492                         | 726       |
| (3) Family living from the farm              |              | 239                          | 304       |
| (4) Total farm receipts (1)+(2)+(3)          |              | 25275                        | 13732     |
| <b>FARM EXPENSES</b>                         |              |                              |           |
| Dairy and dual-purpose cattle bought         |              | \$ 231                       | \$ 94     |
| Beef cattle bought (including feeders)       |              | 2513                         | --        |
| Hogs bought                                  |              | 596                          | 25        |
| Sheep bought (including feeders)             |              | 12                           | --        |
| Horses bought                                |              | --                           | --        |
| Poultry (including turkeys)                  |              | 552                          | 57        |
| Misc. livestock expense                      |              | 532                          | 397       |
| Feed   |              | 4313                         | 1736      |
| Fertilizers                                  |              | 886                          | 570       |
| Other crop expense                           |              | 590                          | 639       |
| Custom work hired                            |              | 556                          | 380       |
| Gas, oil, and grease                         |              | 852                          | 560       |
| Rep. tractor, truck, auto (farm share)       |              | 365                          | 414       |
| Rep. and upkeep of real estate               |              | 340                          | 52        |
| Rep. and upkeep of crop & gen. mach.         |              | 309                          | 198       |
| Rep. and upkeep of livestock equip.          |              | 145                          | 155       |
| Wages of hired labor                         |              | 587                          | 464       |
| Electricity expense (farm share)             |              | 217                          | 216       |
| Real est. and pers. prop. taxes              |              | 598                          | 104       |
| Cash rent                                    |              | 116                          | 499       |
| Gen. farm and insurance                      |              | 239                          | 175       |
| Interest paid                                |              | --                           | --        |
| Total cash operating expenses                |              | 14549                        | 6735      |
| Mec. power bought (farm share)               |              | 742                          | 416       |
| Crop and gen. mach. bought                   |              | 870                          | 1039      |
| Livestock equipment bought                   |              | 293                          | 413       |
| New real estate improvements                 |              | 1038                         | 31        |
| (5) Total farm purchases                     |              | 17492                        | 8634      |
| (6) Decrease in farm capital                 |              | --                           | --        |
| (7) Interest on farm capital                 |              | 2213                         | 908       |
| (8) Unpaid family labor                      |              | 318                          | 464       |
| (9) Board furnished hired labor              |              | 24                           | --        |
| (10) Total farm expenses (5)+(6)+(7)+(8)+(9) |              | 20047                        | 10006     |
| (11) Labor earnings (4) - (10)               |              | 5228                         | 3726      |
| (12) Ret. to cap. & fam. Lab. (7+8+11)       |              | 7759                         | 5098      |



### RANGE IN EARNINGS

There was a wide range of earnings in 1957. This was in sharp contrast to 1956. Crop yields were somewhat lower than in 1956. Grain prices were lower, and costs (corn and harvesting in particular) were considerably higher. Feeding operations were unusually profitable in 1957. Factors that we feel contributed the most to differences in labor earnings this particular year were in order of our appraisal: 1. Size of business; 2. Work units per worker; 3. Productive livestock per 100 acres; 4. Livestock feeding efficiency.



"WORK UNITS"

The total "work units" for any one farm is a measure of the size of that farm business. A work unit as used in this report is the average accomplishment of a farm worker in a ten hour day. The number of work units for each class of livestock and each acre of crop are presented in Table 7.

Table 7 Number of Work Units for Each Class of Livestock and Each Acre of Crop

| Item                          | No. of<br>work units | Item            | No. of<br>work units |
|-------------------------------|----------------------|-----------------|----------------------|
| Dairy and dual-purpose cows   | 10.0 per cow         | Small grain     | .5 per acre          |
| Other dairy & du. pur. cattle | 3.5 per an. unit*    | Sugar beets     | 1.5 per acre         |
| Beef breeding herd            | 3.5 per an. unit*    | Sweet corn      | .7 per acre          |
| Feeder cattle                 | .25 per 100 lbs.     | Corn husked     | .7 per acre          |
| Sheep - farm flock            | 1.5 per an. unit*    | Corn, hogged    | .4 per acre          |
| Sheep - feeders               | .3 per 100 lbs.      | Corn, shredded  | 1.5 per acre         |
| Hogs                          | .2 per 100 lbs.      | Corn, silage    | 1.0 per acre         |
| Turkeys                       | .5 per 100 lbs.      | Corn, fodder    | 1.0 per acre         |
| Hens                          | 20.0 per 100 hens    | Alfalfa hay     | .6 per acre          |
| Canning peas                  | .5 per acre          | Soybean hay     | .8 per acre          |
| Soybeans for grain            | .5 per acre          | Other hay crops | .4 per acre          |

\* Animal unit represents one dairy cow or bull; two other dairy cattle; 1 1/4 beef cows or bull; 1 feeder steer or heifer; 3 1/3 other beef cattle; 7 sheep; 14 lambs; 2 1/2 hogs; 5 pigs; 50 hens or 1,100 pounds of turkeys produced.

Table 8 Measures of Farm Organization and Management Efficiency 1957

| Measures used in chart on page 11                   | Your farm | Average of 38 farms | 12 most profitable farms | 12 least profitable farms |
|---|-----------|---------------------|--------------------------|---------------------------|
| Labor earnings                                      | \$ _____  | \$5106              | \$9602                   | \$968                     |
| (1) Crop yields*                                    | _____     | 100                 | 107                      | 94                        |
| (2) Per cent tillable land in high return crops     | _____     | 56.5                | 56.3                     | 59.2                      |
| (3) Return for \$100 feed to produce livestock*     | _____     | 100                 | 103                      | 90                        |
| (4) Prod. livestock units per 100 A.**              | _____     | 39.8                | 53.6                     | 32.8                      |
| (5) Size of business - work units                   | _____     | 448                 | 575                      | 379                       |
| (6) Work units per worker                           | _____     | 294                 | 357                      | 253                       |
| (7) Pow.; Mach.; equip.; & bldg. exp. per work unit | \$ _____  | \$ 10.78            | \$ 10.15                 | \$ 12.76                  |

Items related to some of the above measures:\*\*\*

|  |          |         |         |         |
|--|----------|---------|---------|---------|
| (3) Index of return for \$100 feed from: |          |         |         |         |
| Dairy cattle (see pages 15 & 16)         | _____    | 100     | 95      | 101     |
| Beef cattle-breeding herd (see page 17)  | _____    | 100     | --      | 97      |
| Beef cattle-feeders (see page 17)        | _____    | 100     | 111     | 95      |
| Hogs (see page 13 & 14)                  | _____    | 100     | 108     | 81      |
| Sheep - farm flock (see page 18)         | _____    | 100     | 54      | 77      |
| Chickens (see page 19)                   | _____    | 100     | 95      | 84      |
| Turkeys (see page 20)                    | _____    | 100     | 112     | 97      |
| (4) Number of animal units               | _____    | 69.2    | 95      | 62.8    |
| (5) Work units on crops                  | _____    | 103     | 113     | 108     |
| Work units on productive livestock       | _____    | 345     | 462     | 271     |
| (7) Power exp. per work unit             | \$ _____ | \$ 5.42 | \$ 5.06 | \$ 6.29 |
| Crop Mach. exp. per work unit            | \$ _____ | \$ 2.36 | \$ 2.01 | \$ 3.17 |
| Livestock equip. exp. per work unit      | \$ _____ | \$ .77  | \$ .81  | \$ .86  |
| Bldg. & fence exp. per work unit         | \$ _____ | \$ 2.23 | \$ 2.27 | \$ 2.44 |

\* Given as a percentage of the average.

\*\* Acres in timber not pastured, roads, waste and farmstead were not included.

\*\*\* Cooperators from Austin and Mankato were combined on beef breeding herds, beef feeder cattle, sheep, and turkeys.

Using your figures from page 10, locate your standing with respect to the various measures of farm organization and management efficiency. The averages for the 38 farms included in this summary are located between the dotted lines across the center of this page.

THERMOMETER CHART

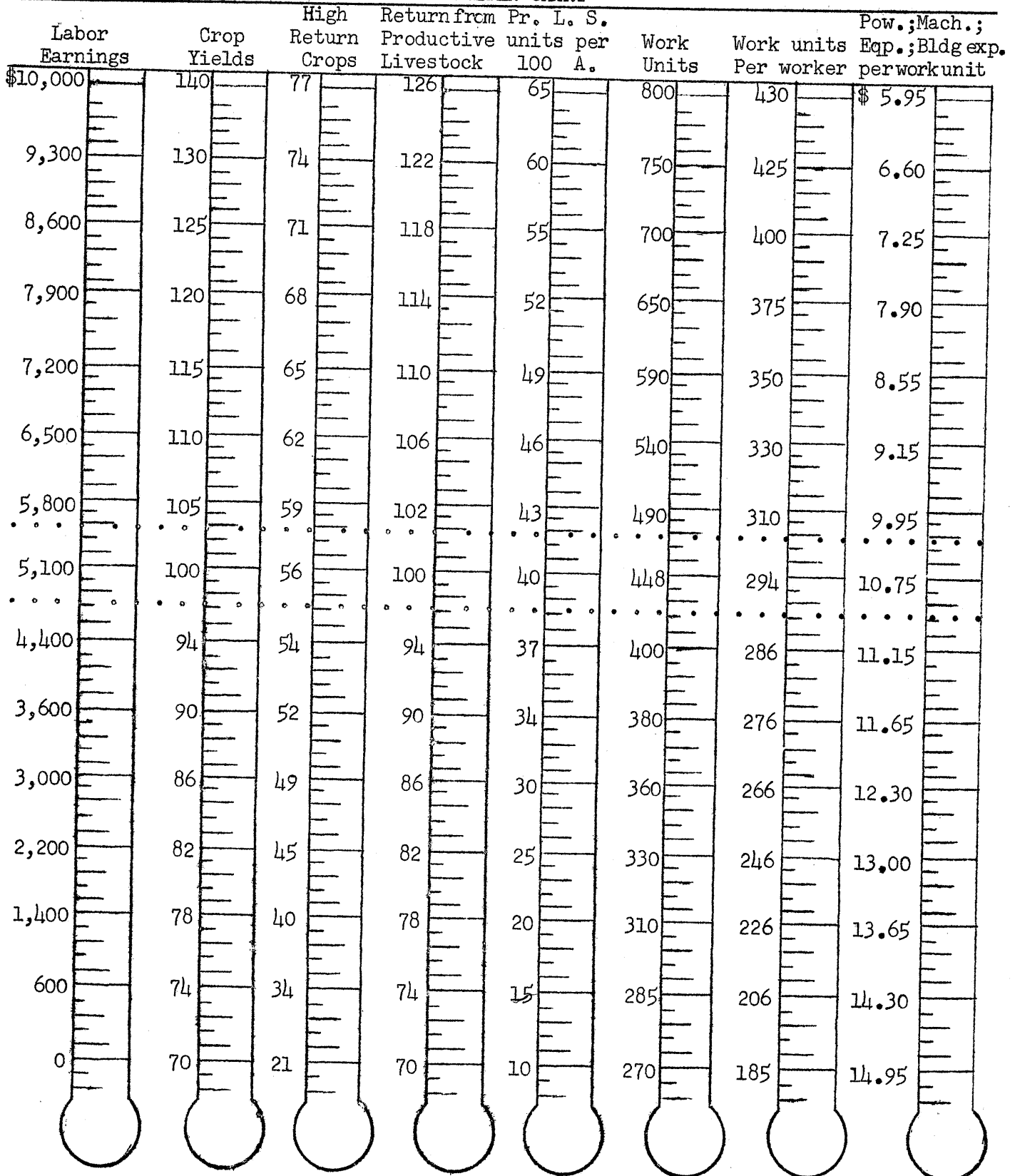


Table 9 Distribution of Acres and Yield 1957

| Crop                                    | Crop rating | Number growing | Acres your farm | Average acres of 38 farms | Your yields | Average yield |
|---|-------------|----------------|-----------------|---------------------------|-------------|---------------|
| Oats (and mixtures)                     | D           | 37             | _____           | 34.4                      | _____       | 56.8          |
| Oats silage                             | C           | 7              | _____           | 3.1                       | _____       | 8.2           |
| Canning Peas                            | B           | 2              | _____           | .9                        | _____       | \$54.00       |
| Wheat                                   | C           | 1              | _____           | .8                        | _____       | 16.9          |
| Barley and Rye                          | D           | 3              | _____           | .7                        | _____       | --            |
| Total small grain & peas                |             |                | _____           | 39.9                      | _____       |               |
| Canning corn                            | B           | 3              | _____           | 2.1                       | _____       | 5.3T          |
| Corn grain                              | A           | 38             | _____           | 69.1                      | _____       | 69.7          |
| Soybeans (grain)                        | B           | 20             | _____           | 20.1                      | _____       | 27.9          |
| Corn silage                             | B           | 21             | _____           | 4.4                       | _____       | 12.9T         |
| Total cultivated crops                  |             |                | _____           | 95.7                      | _____       |               |
| Alfalfa hay                             | B           | 31             | _____           | 22.4                      | _____       | 2.6T          |
| Red Clover hay                          | C           | 4              | _____           | 1.8                       | _____       | 2.6T          |
| Other Legumes & Legume mixtures         | C           | 4              | _____           | 1.7                       | _____       | 2.1T          |
| *Misc. Hay and seed                     | D           | 4              | _____           | 1.3                       | _____       |               |
| Total tillable land in hay              |             |                | _____           | 27.2                      | _____       |               |
| Alfalfa pasture                         | B           | 27             | _____           | 16.                       | _____       |               |
| Other legume pasture (C or B)           |             | 8              | _____           | 4.                        | _____       |               |
| Other tillable pasture                  | D           | 10             | _____           | 2.6                       | _____       |               |
| Total tillable land in pasture          |             |                | _____           | 22.6                      | _____       |               |
| Soil Bank and tillable land not cropped | A           |                | _____           | 1.6                       | _____       |               |
| Total tillable land                     |             |                | _____           | 187.                      | _____       |               |
| Wild Hay                                |             |                | _____           | .7                        | _____       |               |
| Non-tillable pasture                    |             |                | _____           | 9.8                       | _____       |               |
| Timber                                  |             |                | _____           | 3.5                       | _____       |               |
| Roads and waste                         |             |                | _____           | 9.0                       | _____       |               |
| Farmstead                               |             |                | _____           | 9.0                       | _____       |               |
| Total acres in farm                     |             |                | _____           | 219.                      | _____       |               |
| Per cent land tillable                  |             |                | _____           | 85.                       | _____       |               |
| Per cent in high return crops           |             |                | _____           | 56.3                      | _____       |               |

\* Some crops were grouped because acreages for each were less than one acre. Included are legumes for seed and timothy for seed and emergency hay crops.

# TOTAL FEED COSTS AND RETURNS FROM YOUR LIVESTOCK ENTERPRISES

The total "return over feed costs" for each class of livestock is shown in Table 10. This differs from the "return over feed" shown in the enterprise statement in that it is the total for each class of livestock instead of a return "per head" "per unit" or "per 100 pounds". These data indicate the relative importance of different classes of livestock as a source of income and as a market for feed. The value of milk consumed by calves is included in the total returns from dairy or dual purpose cows and in the total feed cost for other dairy or other dual purpose cattle. The value of milk consumed by calves is not included in either the total returns or the feed cost of "all dairy" or "all dual purpose" cattle. The return over feed is not a net return, but rather the amount available from the gross income, after paying the feed bill, to cover the outlay for hired labor, power, equipment, taxes, insurance, interest, and veterinary bills, and to provide a return for the use of family labor and capital.

Table 10 Total Feed Costs and Returns From Your Livestock Enterprises, 1957

|                        | Dairy or Dual Purpose Cattle |       |                        | Beef<br>breeding<br>herd |
|------------------------|------------------------------|-------|------------------------|--------------------------|
|                        | Cows                         | Other | All                    |                          |
| Total returns          |                              |       |                        |                          |
| Total feed cost        |                              |       |                        |                          |
| Total return over feed |                              |       |                        |                          |
|                        | Feeder<br>cattle             | Hogs  | Farm flock<br>of sheep | Chickens                 |
|                        |                              |       |                        |                          |
| Total returns          |                              |       |                        |                          |
| Total feed cost        |                              |       |                        |                          |
| Total return over feed |                              |       |                        |                          |

Feed is the largest single item of cost for all classes of livestock. The proportion of the total cost represented by feed varies between classes of livestock. Feed makes up approximately 45 per cent of the total costs of maintaining dairy cattle and poultry, 50 per cent in the case of a farm flock of sheep, and 75 to 90 per cent for hogs, feeder cattle and feeder lambs. It is necessary to secure a relatively higher return over feed from dairy cattle and poultry than from the other livestock enterprises to cover costs other than feed.

## HOGS

Hogs and dairy were the major livestock enterprises in the area. Only those farmers producing 4000 pounds of pork or more were included in the analysis. 1957 was an ideal year to feed hogs. Feed prices were relatively low as compared to pork prices. Toward the close of the year the corn-hog ratio was as wide as 1:20.

Table 11 Feed Costs and Returns from Hogs 1957

| Items   | Your<br>farm | Average*<br>of 30<br>farms | 10 farms<br>highest in<br>returns<br>above feed | 16 farms<br>lowest<br>in returns<br>above feed |
|---|--------------|----------------------------|---|--|
| Feed per cwt. hogs produced, lbs.:                |              |                            |   |  |
| Corn  |              | 332                        | 272   | 414  |
| Small grain                                       |              | 77                         | 69  | 112  |
| Commercial feeds                                  |              | 60                         | 50  | 62   |
| Total concentrates & alfalfa                      |              | 469                        | 391   | 588  |
| Whey  |              | 72                         | 1   | 91   |
| Feed cost per cwt. hogs produced:                 |              |                            |   |  |
| Concentrates (incl. whey & alf.)                  |              | \$10.98                    | \$ 9.07   | \$13.55  |
| Milk  |              | --                         | --  | --   |
| Pasture   |              | .11                        | .17   | .08  |
| TOTAL FEED COSTS                                  |              | \$11.09                    | \$ 9.24   | \$13.63  |
| Net increase in val. per cwt. hogs prod.          |              | \$18.72                    | \$19.89   | \$17.50  |
| RETURNS ABOVE FEED COST PER CWT.<br>HOGS PRODUCED |              | \$ 7.63                    | \$10.65   | \$ 3.87  |
| RETURNS FOR \$100 OF FEED                         |              | \$177                      | \$218   | \$132  |
| Price received per cwt. hogs sold                 |              | \$18.29                    | \$19.03   | \$17.89  |
| No. of spring litters raised                      |              | 13                         | 12  | 8.4  |
| No. of fall litters raised                        |              | 12                         | 10  | 4.3  |
| Total no. of litters raised                       |              | 25                         | 22  | 12.7   |
| No. of pigs born per litter                       |              | 8.9                        | 9.5   | 7.7  |
| No. of pigs weaned per litter                     |              | 6.8                        | 7.5   | 5.4  |
| Pounds of hogs produced                           |              | 42601                      | 38782   | 23972  |

\* Thirty-three cooperators qualified as hog producers - Three records showed slight inconsistency and were omitted from the averages.

#### DAIRY AND DUAL PURPOSE CATTLE

No herds were classes as dual purpose. Young cattle from herds bred to beef bulls were classes as beef.

Production was generally high. It will be noted that the high producing herds gave a higher return per hundred dollars worth of feed than the average, but this difference was not nearly as significant as the return over feed cost per cow.

Table 12 Factors of Cost and Returns from Dairy Cows 1957

| FACTORS OF COST AND RETURNS FROM DAIRY COWS 1957 |              |                           |   |  |
|--|--------------|---------------------------|---|--|
| Items  | Your<br>farm | Average<br>of 25<br>farms | 8 farms<br>Highest in<br>butterfat<br>per cow | 8 farms<br>lowest in<br>butterfat<br>per cow |
| Pounds of Butterfat per cow                      |              | 332                       | 387   | 227  |
| Price rec. per lb. B.F. sold (cents)             |              | 90.3                      | 90.6  | 88.5   |
| Feeds per cow, lbs:                              |              |                           |   |  |
| Corn   |              | 1809                      | 1773  | 1592   |
| Small grain                                      |              | 693                       | 658   | 579  |
| Commercial feeds                                 |              | 505                       | 672   | 438  |
| Legume hay                                       |              | 4492                      | 5367  | 3755   |
| Other hay  |              | 22                        | --  | 68   |
| Fodder and stover                                |              | --                        | --  | --   |
| Total concentrates                               |              | 3007                      | 3103  | 2609   |
| Total dry roughage                               |              | 4514                      | 5367  | 3823   |
| Silage   |              | 7361                      | 6998  | 9019   |
| Feed cost per cow:                               |              |                           |   |  |
| Concentrates                                     |              | \$ 70.05                  | \$ 74.96                                      | \$ 59.36                                     |
| Roughages  |              | 60.89                     | 72.06   | 58.22  |
| Pasture  |              | 13.62                     | 12.77   | 14.11  |
| TOTAL FEED COSTS                                 |              | \$144.56                  | \$159.79                                      | \$131.69                                     |
| Value of produce per cow:                        |              |                           |   |  |
| B.F. sales                                       |              | \$284.91                  | \$340.46                                      | \$227.65                                     |
| Dairy produce used in home                       |              | 5.59                      | 5.00  | 4.95   |
| Milk to livestock                                |              | 11.20                     | 9.95  | 11.11  |
| Net increases in value of cows                   |              | -3.34                     | -5.54   | 2.74   |
| TOTAL VALUE PRODUCED                             |              | \$298.36                  | \$349.87                                      | \$246.45                                     |
| RETURNS ABOVE FEED COST PER COW                  |              | \$153.80                  | \$190.08                                      | \$114.76                                     |
| RETURNS FOR \$100 OF FEED                        |              | \$211.00                  | \$223.00                                      | \$194.00                                     |
| Feed cost per lb. B.F. (cents)                   |              | 44.6                      | 41.0  | 48.4   |
| Number of cows*                                  |              | 21.7                      | 26.0  | 17.4   |

\* All dairy cows which have at some time in the past freshened are included in the dairy herd, and affect the average number of cows used in computing this table. There is some variation in the number of months of dry period per cow; however, this variation is small for the majority of farms. Herds of less than five cows were omitted from this study.



**Table 13 Feed Costs and Returns from Other Dairy and Dual Purpose Cattle 1957**

| Items                             | Your<br>farm | Average<br>of 24<br>farms | 8 farms<br>highest in<br>butterfat<br>per cow | 7 farms<br>lowest in<br>butterfat<br>per cow |
|-----------------------------------|--------------|---------------------------|---|--|
| Feeds per head, lbs.:             |              |                           |   |  |
| Concentrates                      | _____        | 1050                      | 883   | 674  |
| Hay and fodder                    | _____        | 1883                      | 2048  | 1768   |
| Silage                            | _____        | 2321                      | 2526  | 2879   |
| Skim milk                         | _____        | --                        | --  | --   |
| Whole milk                        | _____        | 325                       | 282   | 325  |
| Feed cost per head:               |              |                           |   |  |
| Concentrates                      | _____        | \$19.90                   | \$24.43                                       | \$17.28                                      |
| Roughages                         | _____        | 21.51                     | 25.04   | 23.60  |
| Milk                              | _____        | 9.98                      | 8.28  | 9.63   |
| Pasture                           | _____        | 4.94                      | 4.85  | 4.45   |
| TOTAL FEED COSTS PER HEAD         | _____        | \$56.33                   | \$62.60                                       | \$54.96                                      |
| Net inc. in value of other cattle | _____        | \$84.76                   | \$86.95                                       | \$81.08                                      |
| RETURNS ABOVE FEED COST PER HEAD  | _____        | \$28.43                   | \$24.35                                       | \$26.12                                      |
| RETURNS FOR \$100 OF FEED         | _____        | \$154.00                  | \$143.00                                      | \$152.00                                     |
| Number of head of other cattle    | _____        | 23.1                      | 27.7  | 18.8   |

**TABLE 14 Feed Costs and Returns from All Dairy and Dual Purpose Cattle 1957**

| Items                                    | Your<br>farm | Average<br>of 24<br>farms | 8 farms<br>highest in<br>butterfat<br>per cow | 7 farms<br>lowest in<br>butterfat<br>per cow |
|--|--------------|---------------------------|---|--|
| Feed per animal unit, lbs.:              |              |                           |   |  |
| Concentrates                             | _____        | 2566                      | 2607  | 2066   |
| Hay and fodder                           | _____        | 4206                      | 4880  | 3829   |
| Silage                                   | _____        | 6532                      | 6361  | 8288   |
| TOTAL FEED COSTS PER ANIMAL UNIT         | _____        | \$129.60                  | \$140.72                                      | \$118.69                                     |
| Value of produce per animal unit:        |              |                           |   |  |
| Dairy products                           | _____        | \$195.34                  | \$222.62                                      | \$154.50                                     |
| Net increase in value of dairy<br>cattle | _____        | \$ 55.30                  | \$ 55.59                                      | \$ 56.79                                     |
| TOTAL VALUE PRODUCED                     | _____        | \$250.64                  | \$278.21                                      | \$211.29                                     |
| RETURNS ABOVE FEED PER ANIMAL UNIT       | _____        | \$121.04                  | \$137.49                                      | \$ 92.60                                     |
| RETURNS PER \$100 OF FEED                | _____        | \$195.00                  | \$199.00                                      | \$182.00                                     |
| Animal units of cattle                   | _____        | 33.3                      | 40.0  | 28.3   |

Table 15 Feed Cost and Returns from Beef Cattle 1957

| Items   | Your<br>farm | Average<br>of all<br>farms |
|---|--------------|----------------------------|
| Beef breeding herd: No. of farms: 3 Austin Area, 1 Mankato Area |              |                            |
| Feeds per animal unit, lbs.:                                    |              |                            |
| Concentrates  |              | 1883                       |
| Legume  |              | 4324                       |
| Other hay   |              | --                         |
| Silage  |              | 2265                       |
| Feed cost per animal unit:                                      |              |                            |
| Concentrates  | \$           | \$ 42.47                   |
| Roughages   |              | 44.67                      |
| Pasture   |              | 17.98                      |
| TOTAL FEED COSTS  |              | \$105.12                   |
| Value of produce per animal unit:                               |              |                            |
| Dairy products  | \$           | \$ .96                     |
| Net increase in value of animals                                |              | 112.82                     |
| TOTAL VALUE PRODUCED  |              | \$113.78                   |
| RETURNS ABOVE FEED COST PER ANIMAL UNITS                        | \$           | \$ 9.87                    |
| RETURNS FOR \$100 OF FEED                                       | \$           | \$107.00                   |
| Number of cows and herd bulls                                   |              | 29.5                       |
| Number of animal units in the herd                              |              | 32.8                       |
| Pounds of beef produced   |              | 16,151                     |
| Feeding Cattle: No. of farms: 4 Austin Area, 11 Mankato Area    |              |                            |
| Feeds per cwt. beef produced, lbs.:                             |              |                            |
| Corn  |              | 515                        |
| Small grain   |              | 17                         |
| Commercial feeds  |              | 67                         |
| Legume hay  |              | 226                        |
| Other hay and fodder  |              | 12                         |
| Total concentrates  |              | 599                        |
| Total hay and fodder  |              | 238                        |
| Silage  |              | 482                        |
| Feed cost per cwt. beef produced:                               |              |                            |
| Concentrates  | \$           | \$ 12.58                   |
| Roughages   |              | 3.56                       |
| Pasture   |              | .56                        |
| TOTAL FEED COSTS  |              | \$ 16.70                   |
| Net increase in value of feeders                                |              | 27.42                      |
| RETURNS ABOVE FEED COST PER CWT. BEEF PRODUCED                  |              | 10.72                      |
| RETURNS FOR \$100 OF FEED                                       | \$           | \$172.00                   |
| Price paid per cwt. beef bought                                 | \$           | \$ 22.20                   |
| Price received for feeder cattle sold                           |              | 21.05                      |
| Number of animal units  |              | 51.8                       |
| Pounds of beef produced   |              | 312,371                    |

SHEEP

FARM FLOCKS IN THIS AREA ARE SMALL AND THE FEED CONSUMPTION IS HIGH BECAUSE OF FEED AVAILABILITY. EFFORTS WERE MADE TO HAVE COOPERATORS CHARGE THE FLOCK FOR ALL FEED CONSUMED. THE TABLE BELOW INCLUDES 2 FARMS FROM THE AUSTIN AREA AND 5 FARMS FROM THE MANKATO AREA.

Table 16 Feed Costs and Returns from a Farm Flock of Sheep 1957

| Items                            | Your<br>farm | Average of<br>7 farms<br>in southern<br>Minnesota |
|----------------------------------|--------------|---|
| Feeds per head,* lbs.:           |              |   |
| Concentrates                     |              | 142   |
| Legume hay                       |              | 623   |
| Other hay                        |              | 31  |
| Silage                           |              | 283   |
| Feed cost per head:              |              |   |
| Concentrates                     | \$           | \$ 3.22   |
| Roughages                        |              | 6.78  |
| Pasture                          |              | 1.85  |
| TOTAL FEED COSTS                 | \$           | \$ 11.85  |
| Value of produce per head:       |              |   |
| Wool                             | \$           | \$ 4.28   |
| Net increase in value of sheep   |              | 16.01   |
| TOTAL VALUE PRODUCED             | \$           | \$ 20.29  |
| RETURNS ABOVE FEED COST PER HEAD | \$           | \$ 8.44   |
| RETURNS FOR \$100 OF FEED        | \$           | \$175.00  |
| Price per cwt. of lambs sold     | \$           | \$ 22.33  |
| Price per lb. wool sold (cents)  |              | .58   |
| Pounds of wool per sheep sheared |              | 8.6   |
| Number of ewes kept for lambing  |              | 54.5  |
| Per cent lamb crop**             |              | 127   |
| Per cent death loss**            |              | 10  |
| Pounds of sheep produced         |              | 54,313  |
| Number of head of sheep*         |              | 83.3  |

\* Two lambs under six months of age considered as one head.

\*\* Lambs which die during month of birth are not included.

# CHICKENS

Flocks from 17 farms are included in this report. Only those flocks averaging 100 or more hens, and having a full year's production are included in the averages. Thirteen farms did not have laying flocks at any time of the year. Three were without a laying flock for a part of the year.

Table 17 Feed Costs and Returns from Chickens 1957

| Items                                   | Your<br>farm | Average<br>of 17<br>farms | 6 farms<br>highest in<br>return<br>above feed | 6 farms<br>lowest in<br>return<br>above feed |
|---|--------------|---------------------------|---|--|
| Feed per hen, lbs.:                     |              |                           |   |  |
| Grain                                   | _____        | 85                        | 93  | 73   |
| Commercial feeds                        | _____        | 42                        | 41  | 48   |
| Total concentrates                      | _____        | 127                       | 134   | 121  |
| Skim milk and buttermilk                | _____        | --                        | --  | --   |
| TOTAL FEED COST PER HEN                 | _____        | \$ 3.64                   | \$ 3.87                                       | \$ 3.48                                      |
| Value of produce per hen:               |              |                           |   |  |
| Eggs sold and used in house             | _____        | \$ 5.27                   | \$ 5.81                                       | \$ 4.58                                      |
| Net increase in value of chickens       | _____        | \$ .25                    | \$ .76  | \$ -.02                                      |
| TOTAL VALUE PRODUCED                    | _____        | \$ 5.52                   | \$ 6.57                                       | \$ 4.56                                      |
| RETURNS ABOVE FEED COST PER HEN         | _____        | \$ 1.88                   | \$ 2.70                                       | \$ 1.08                                      |
| RETURNS FOR \$100 OF FEED               | _____        | \$155.00                  | \$174.00                                      | \$135.00                                     |
| Price rec'd. per doz. eggs sold (cents) | _____        | 28.9                      | 29.6  | 28.5   |
| Eggs laid per hen                       | _____        | 218                       | 237   | 185  |
| Ave. No. hens on farm during year       | _____        | 455                       | 471   | 622  |
| Per cent death loss of hens             | _____        | 10.3                      | 6.0   | 12.8   |

\* Includes feeds and returns from laying flock and chicks raised.

TURKEYS

Turkeys were produced on only two farms included in the Austin Area. These were averaged with one cooperator from the Mankato Area.

Below are the averages from these three farms.

Table 18 Feed Costs and Returns for Turkeys 1957  
(3 Farms in Southern Minnesota)

| Items   | Your<br>farm | Average<br>of 3<br>farms |
|---|--------------|--------------------------|
| Feed per cwt. turkeys produced, lbs.:             |              |                          |
| Grain   |              | 228                      |
| Commercial feeds                                  |              | 204                      |
| Total concentrates                                |              | 432                      |
| Feed cost per cwt. turkeys produced               |              | \$14.00                  |
| Net increase in value per cwt. turkeys produced   |              | \$18.65                  |
| RETURNS ABOVE FEED COST PER CWT. TURKEYS PRODUCED |              | \$ 4.65                  |
| RETURNS FOR \$100 OF FEED                         |              | \$134.00                 |
| No. of poults put on feed                         |              | 11122                    |
| Price paid per poult purchased (cents)            |              | 65.2                     |
| Per cent death loss                               |              | 6.1                      |
| Price received per lb. turkeys sold (cents)       |              | 23.9                     |
| Weight per bird sold (lbs.)                       |              | 13.8                     |
| Pounds of turkey produced                         |              | 122,856                  |

# LOCATION OF COOPERATING EAST SOUTH CENTRAL SCHOOLS

1. Cannon Falls
2. Kenyon
3. Zumbrota
4. Byron
5. Hayfield
6. Blooming Prairie
7. Austin
8. Adams
9. Spring Valley

