



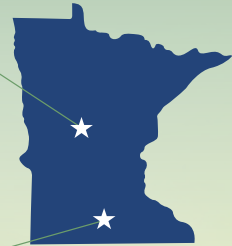
The Way to
a **CAREER**
in **AFNR**

< SCAN WITH YOUR SMART PHONE

minnstate.edu/AFNRCareers

Visit us at
agcentric.org

Judy Barka
Assistant Director
Judy.Barka@clcmn.edu
(320) 221-0219



Visit us at
centerofagriculture.org

Shyanne Rodning
Outreach and Recruitment Coordinator
Shyanne.Rodning@southcentral.edu
(507) 389-7301



[Learn_Grow_Do.](#)
 [Learn, Grow, Do.](#)

\$2,500
WORKFORCE DEVELOPMENT
SCHOLARSHIPS

These workforce development scholarships are for students pursuing careers within advanced manufacturing, agriculture, health care services, information technology, early childhood education, and transportation at any of the 26 state colleges of Minnesota State.



For more information
and to apply visit:
www.minnstate.edu/wds

Minnesota State Colleges & Universities

Agriculture, Food, & Natural Resources (AFNR)

MAJORS & PROGRAMS by Career Cluster

	Agribusiness Systems	Power, Structural, and Technical Systems	Natural Resources Systems	Food Products and Processing Systems	Environmental Systems	Animal Systems	Plant Systems	Biotechnology	Agricultural Education
Alexandria Technical & Community College	♦								
Anoka Tech	♦	♦		♦			♦		
Anoka-Ramsey Community College	♦	♦		♦			♦		
Bemidji State			♦		♦	♦	♦		
Central Lakes College	♦	♦	♦	♦	♦	♦	♦		
Century College		♦	♦		♦		♦		
Dakota County Technical College	♦		♦		♦				
Fond Du Lac Tribal & Community College	♦			♦					
Hennepin Technical College	♦	♦	♦	♦			♦		
Inver Hills Community College			♦						
Lake Superior College	♦	♦							
Minnesota North College	♦	♦	♦	♦	♦				
Minnesota State College Southeast	♦								
Minnesota State University, Moorhead			♦		♦			♦	
Minnesota State Community and Technical College	♦	♦	♦	♦	♦	♦			
Metropolitan State			♦		♦			♦	
Minneapolis Community & Technical College		♦	♦						
Minnesota State University, Mankato	♦	♦	♦	♦	♦			♦	
Minnesota West Community & Technical College	♦	♦	♦	♦	♦	♦	♦		♦
Normandale Community College			♦	♦					
North Hennepin Community College			♦		♦				
Northland Community & Technical College	♦	♦				♦	♦		♦
Northwest Technical College		♦							
Pine Technical & Community College		♦							
Ridgewater College	♦	♦	♦	♦		♦	♦		♦
Riverland Community College	♦	♦		♦				♦	
Rochester Community and Technical College		♦	♦		♦	♦		♦	
St. Cloud State University		♦	♦	♦	♦		♦	♦	
Saint Paul College		♦	♦	♦					
St. Cloud Technical & Community College		♦	♦	♦					
South Central College	♦	♦	♦	♦		♦	♦		♦
Southwest Minnesota State University	♦		♦	♦	♦		♦		♦
Winona State University			♦		♦	♦			
MinnState.edu/online	♦	♦							

This document is available in alternative formats to individuals with disabilities. To request an alternate format, contact Human Resources at 651-201-1664. Individuals with hearing or speech disabilities may contact us via their preferred Telecommunications Relay Service. Minnesota State is an affirmative action, equal opportunity employer and educator.



MINNESOTA STATE
Agricultural Centers of Excellence



AGRICULTURE, FOOD & NATURAL RESOURCES
CAREERS

Are you going in the right direction?

Explore a future career in Agriculture, Food & Natural Resources (AFNR)!

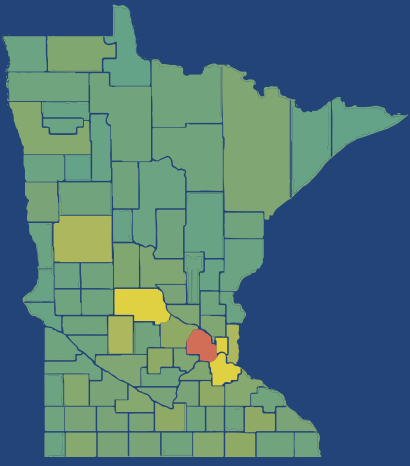
1IN10 JOBS

IN MINNESOTA ARE IN AGRICULTURE

SOURCE: 2020 Minnesota Economic Contribution Study of Agriculture and Forestry

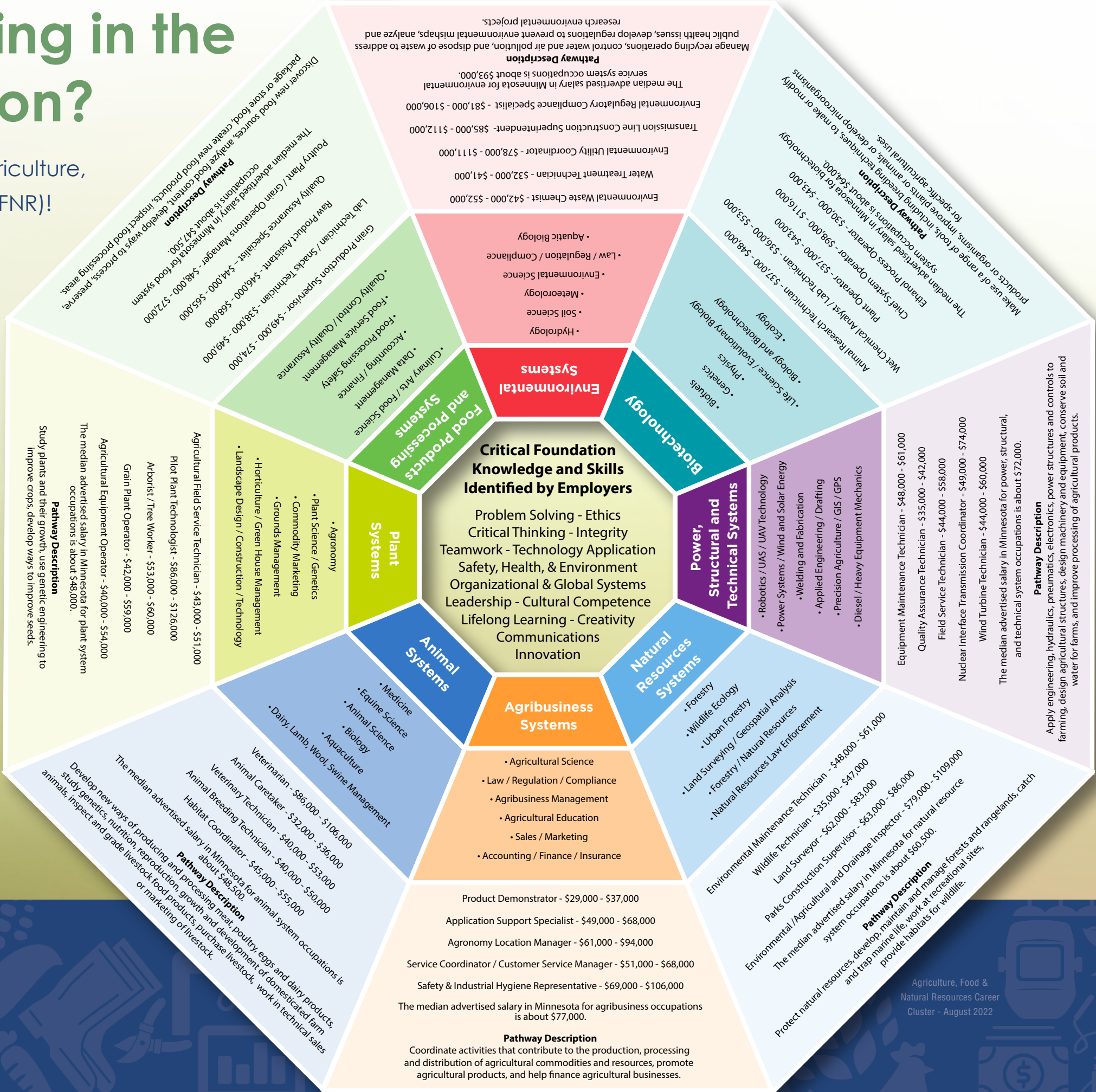
OF THE MORE THAN 338,000 JOBS RELATED TO AGRICULTURE & FORESTRY IN MINNESOTA, HENNEPIN COUNTY ACCOUNTS FOR 8.9% (MORE THAN 34,000)

JOBS DERIVED FROM THE TOTAL AGRICULTURE AND FOREST INDUSTRY



15834,508


SOURCE: 2020 Minnesota Economic Contribution Study of Agriculture and Forestry



IN 2050


THERE WILL BE 9 BILLION PEOPLE TO FEED.

WHAT ROLE COULD YOU PLAY?




WAGE INCREASES

AGRIBUSINESS SYSTEMS



MEDIAN WAGE INCREASE \$17,000

NATURAL RESOURCES SYSTEMS



MEDIAN WAGE INCREASE \$3,000

SOURCE: RealTime Talent. Annual wage increase amounts calculated in comparison to the same MN State AFNR Career Pathway data from the previous year.