



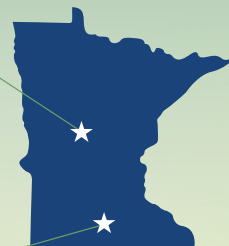
The Way to
a **CAREER**
in **AFNR**

< SCAN WITH YOUR SMART PHONE

minnstate.edu/AFNRCareers

Visit us at
agcentric.org

Judy Barka
Assistant Director
Judy.Barka@clcmn.edu
(320) 221-0219



Visit us at
centerofagriculture.org

Shyanne Rodning
Outreach and Recruitment Coordinator
Shyanne.Rodning@southcentral.edu
(507) 389-7301



[Learn_Grow_Do.](#)
 [Learn, Grow, Do.](#)

\$2,500 WORKFORCE DEVELOPMENT SCHOLARSHIPS

These workforce development scholarships are for students pursuing careers within advanced manufacturing, agriculture, health care services, information technology, early childhood education, and transportation at any of the 26 state colleges of Minnesota State.



For more information
and to apply visit:
www.minnstate.edu/wds

Minnesota State Colleges & Universities

Agriculture, Food, & Natural Resources (AFNR)

MAJORS & PROGRAMS

by Career Cluster

	Agribusiness Systems	Power, Structural, and Technical Systems	Natural Resources Systems	Food Products and Processing Systems	Environmental Systems	Animal Systems	Plant Systems	Biotechnology	Agricultural Education
Alexandria Technical & Community College	◆								
Anoka Technical College	◆								
Anoka-Ramsey Community College				◆					
Bemidji State University	◆			◆	◆	◆	◆		
Central Lakes College	◆	◆	◆	◆	◆	◆	◆		
Century College	◆								
Dakota County Technical College	◆		◆		◆				
Fond Du Lac Tribal & Community College	◆			◆					
Hennepin Technical College	◆	◆	◆				◆		
Inver Hills Community College					◆				
Lake Superior College	◆	◆							
Minnesota North College	◆	◆	◆	◆	◆	◆			
Minnesota State College Southeast	◆	◆							
Minnesota State University, Moorhead	◆			◆	◆				
Minnesota State Community and Technical College	◆			◆					
Metro State University					◆				
Minneapolis Community & Technical College	◆	◆							
Minnesota State University, Mankato	◆	◆	◆	◆	◆			◆	
Minnesota West Community & Technical College	◆	◆	◆	◆	◆	◆	◆	◆	◆
Normandale Community College				◆					
North Hennepin Community College					◆				
Northland Community & Technical College	◆	◆				◆			◆
Pine Technical & Community College		◆							
Ridgewater College	◆	◆		◆		◆	◆		◆
Riverland Community College	◆	◆		◆				◆	
Rochester Community and Technical College		◆			◆	◆			
St. Cloud State University		◆	◆		◆	◆			
Saint Paul College		◆		◆					
St. Cloud Technical & Community College		◆		◆	◆				
South Central College	◆	◆		◆		◆	◆		◆
Southwest Minnesota State University	◆			◆	◆	◆	◆		◆
Winona State University					◆	◆			
MinnState.edu/online	◆	◆							

This document is available in alternative formats to individuals with disabilities. To request an alternate format, contact Human Resources at 651-201-1664. Individuals with hearing or speech disabilities may contact us via their preferred Telecommunications Relay Service. Minnesota State is an affirmative action, equal opportunity employer and educator.



MINNESOTA STATE
Agricultural Centers of Excellence



AGRICULTURE, FOOD & NATURAL RESOURCES CAREERS

Are you going in the right direction?

Explore a future career in Agriculture, Food & Natural Resources (AFNR)!

1 IN 10 JOBS
IN MINNESOTA ARE IN
AGRICULTURE

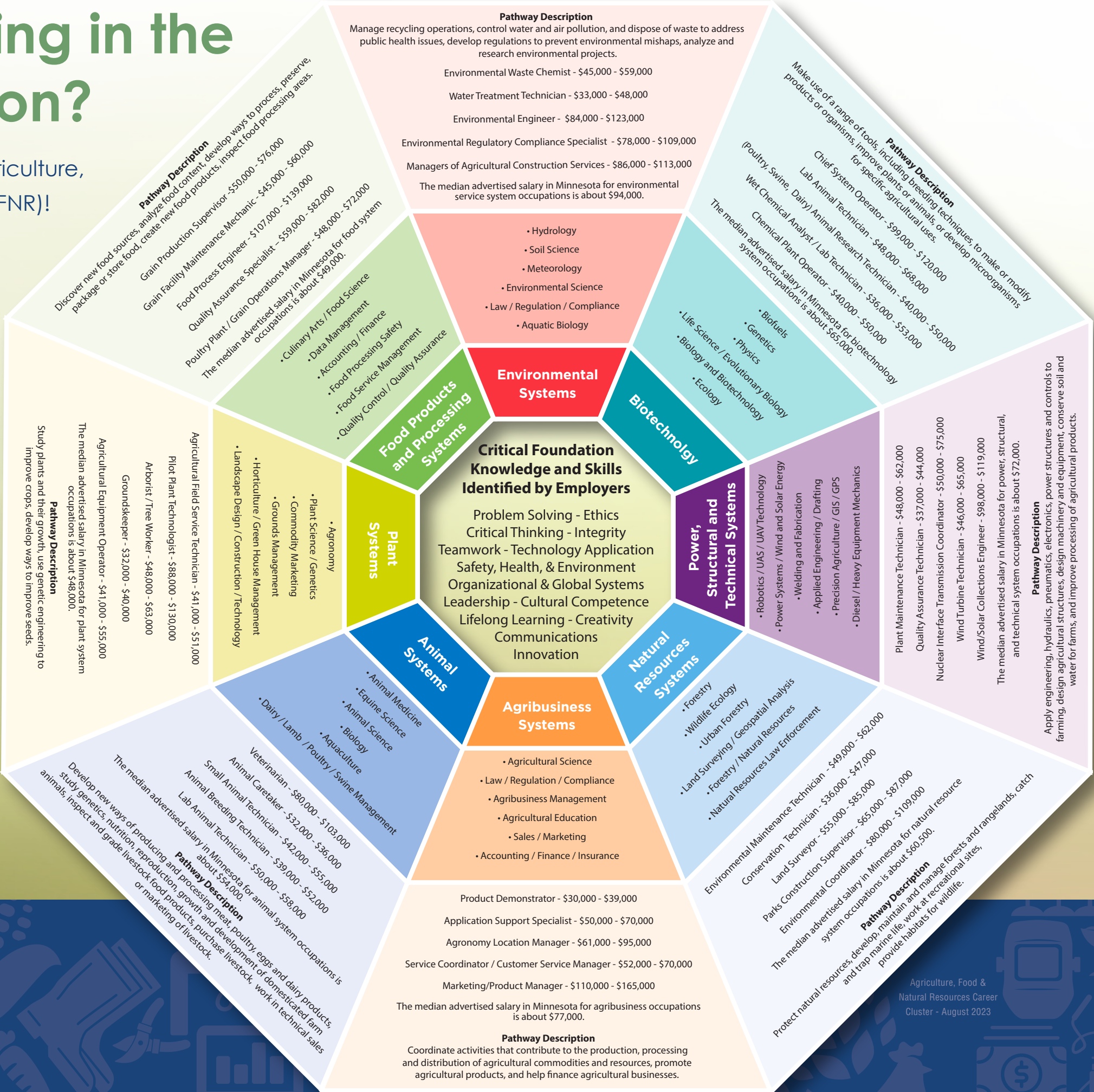
SOURCE: 2020 Minnesota Economic Contribution Study of Agriculture and Forestry

OF THE MORE THAN
338,000 JOBS
RELATED TO AGRICULTURE
& FORESTRY IN MINNESOTA,
HENNEPIN COUNTY
ACCOUNTS FOR 8.9%
(MORE THAN 34,000)

JOBS DERIVED FROM THE TOTAL
AGRICULTURE AND FOREST INDUSTRY

15834,508

SOURCE: 2020 Minnesota Economic Contribution Study of Agriculture and Forestry



IN 2050
THERE WILL BE
9 BILLION
PEOPLE TO FEED.

WHAT ROLE
COULD
YOU PLAY?

WAGE
INCREASES

AGRIBUSINESS
SYSTEMS

MEDIAN WAGE INCREASE
\$17,000

NATURAL
RESOURCES
SYSTEMS

MEDIAN WAGE INCREASE
\$3,000

SOURCE: RealTime Talent. Annual wage increase amounts calculated in comparison to the same MN State AFNR Career Pathway data from the previous year.